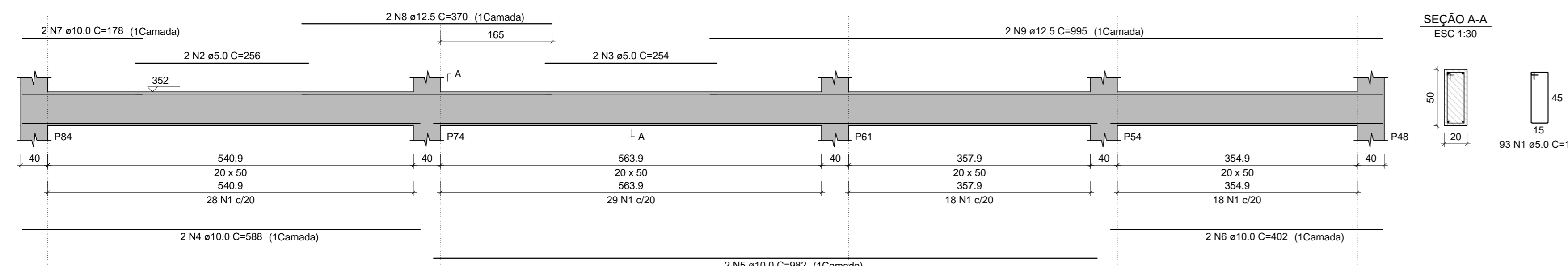
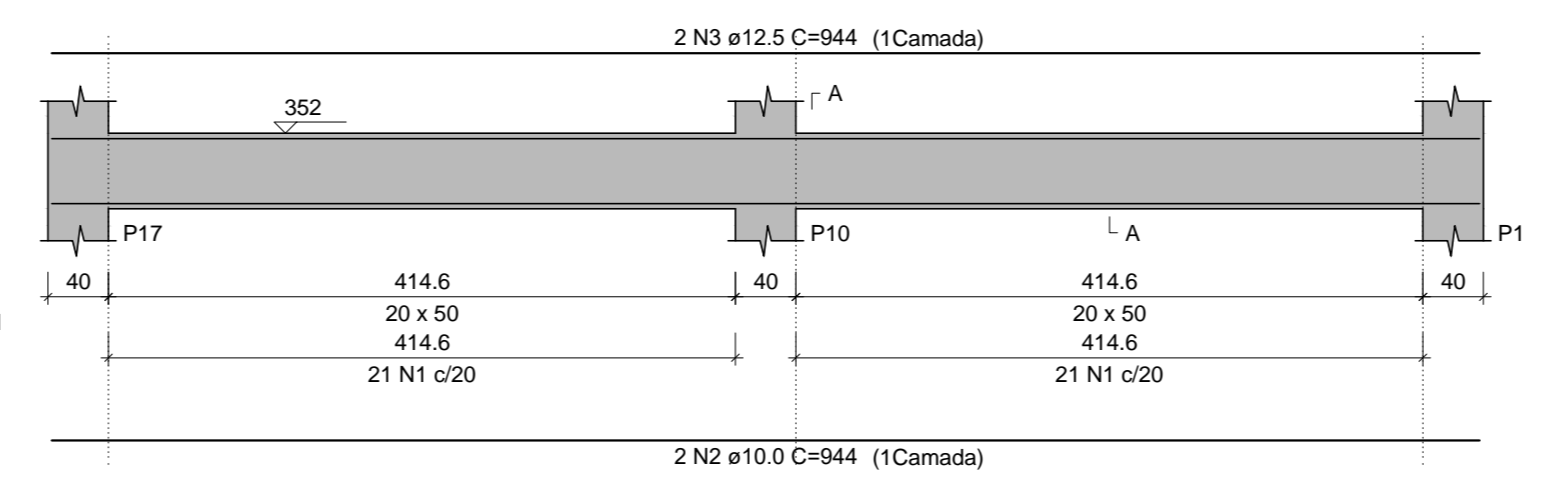


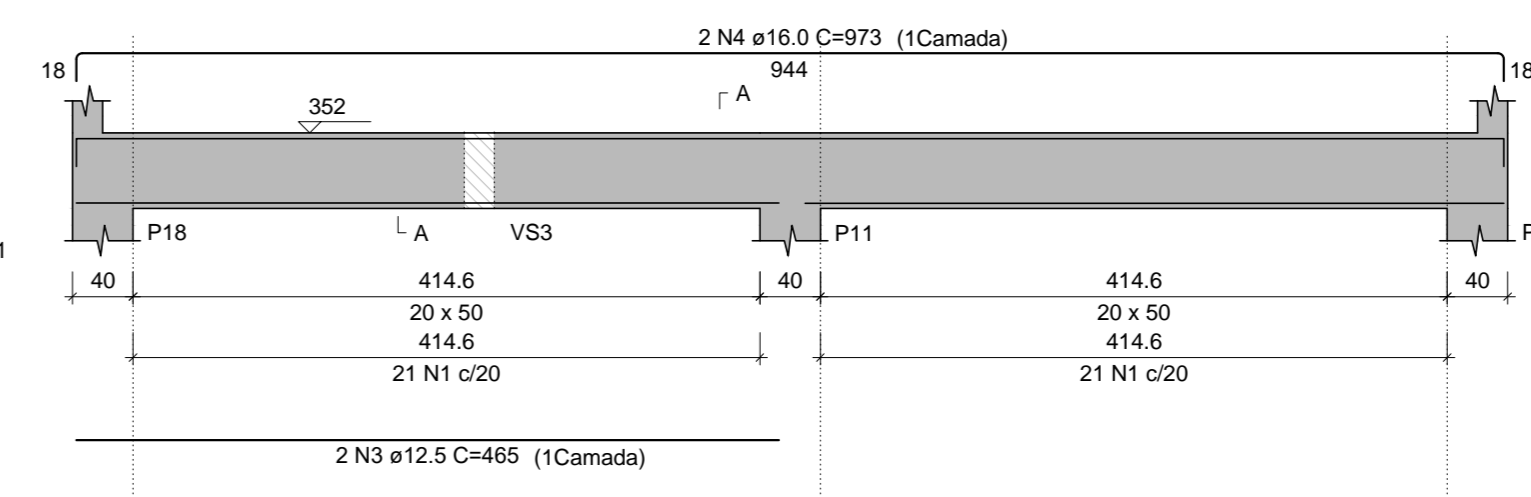
VS24 (20 x 50)
ESC 1:30



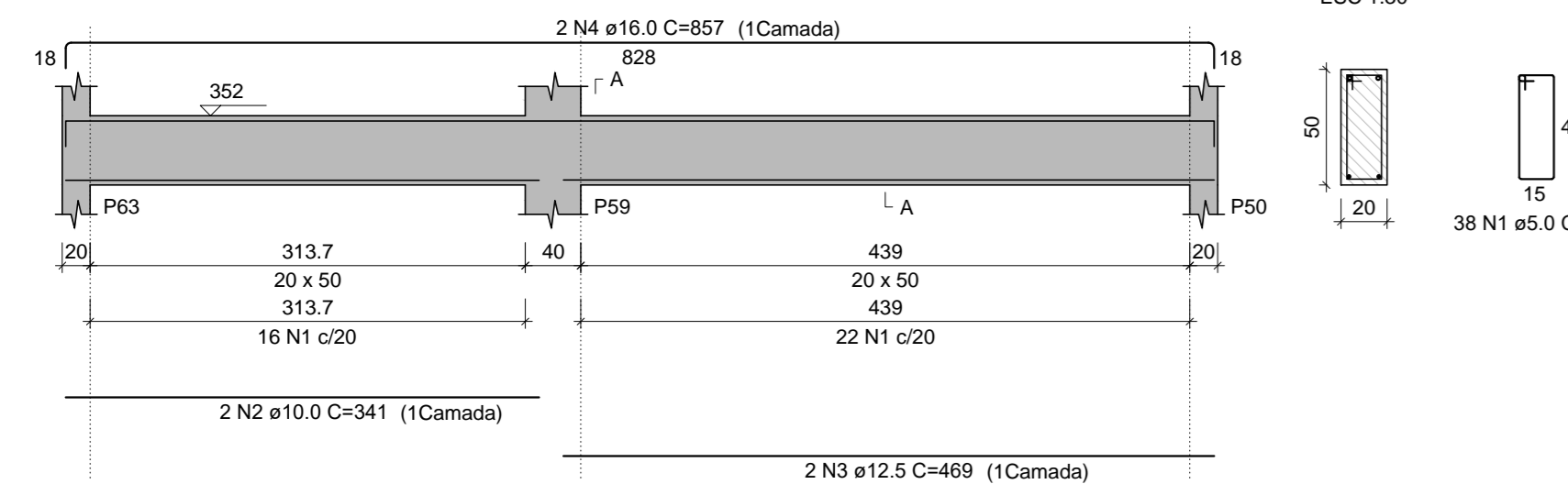
VS25 (20 x 50)
ESC 1:30



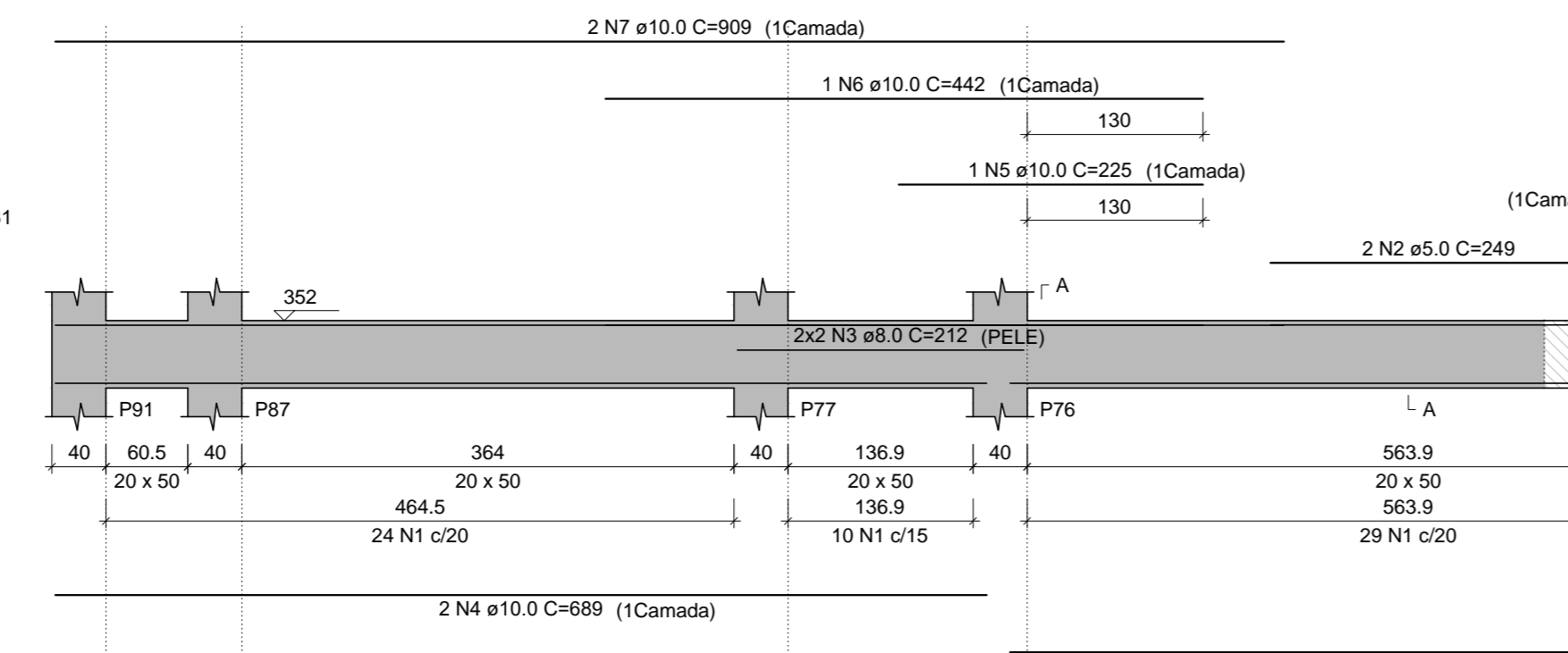
VS26 (20 x 50)
ESC 1:30



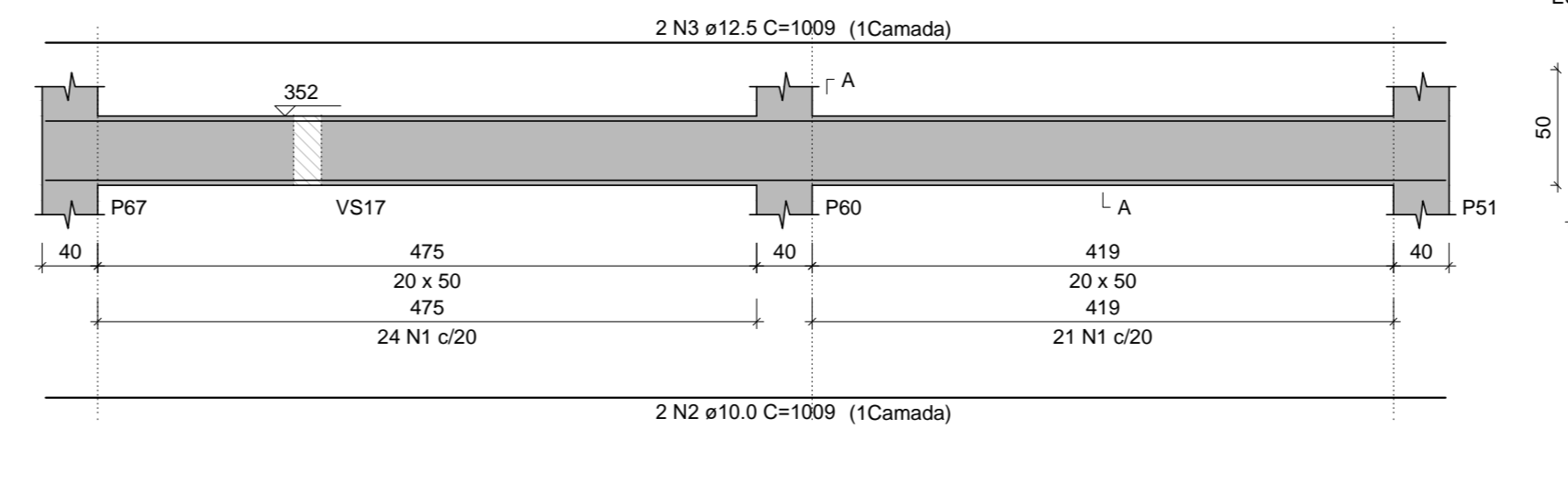
VS27 (20 x 50)
ESC 1:30



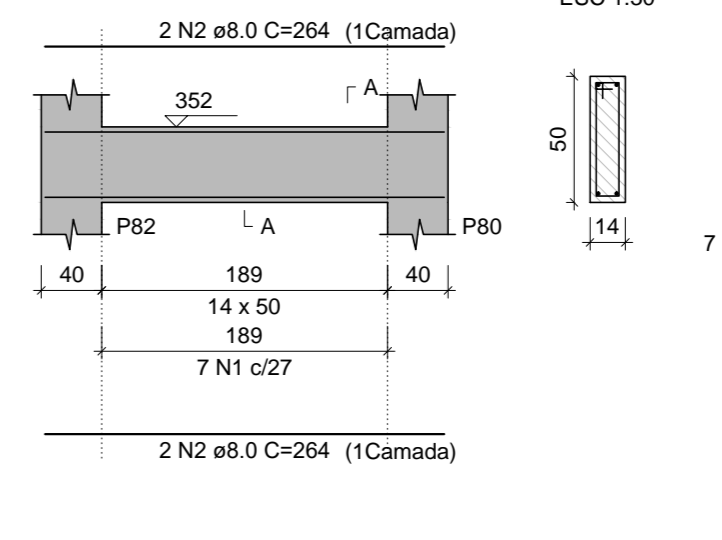
VS28 (20 x 50)
ESC 1:30



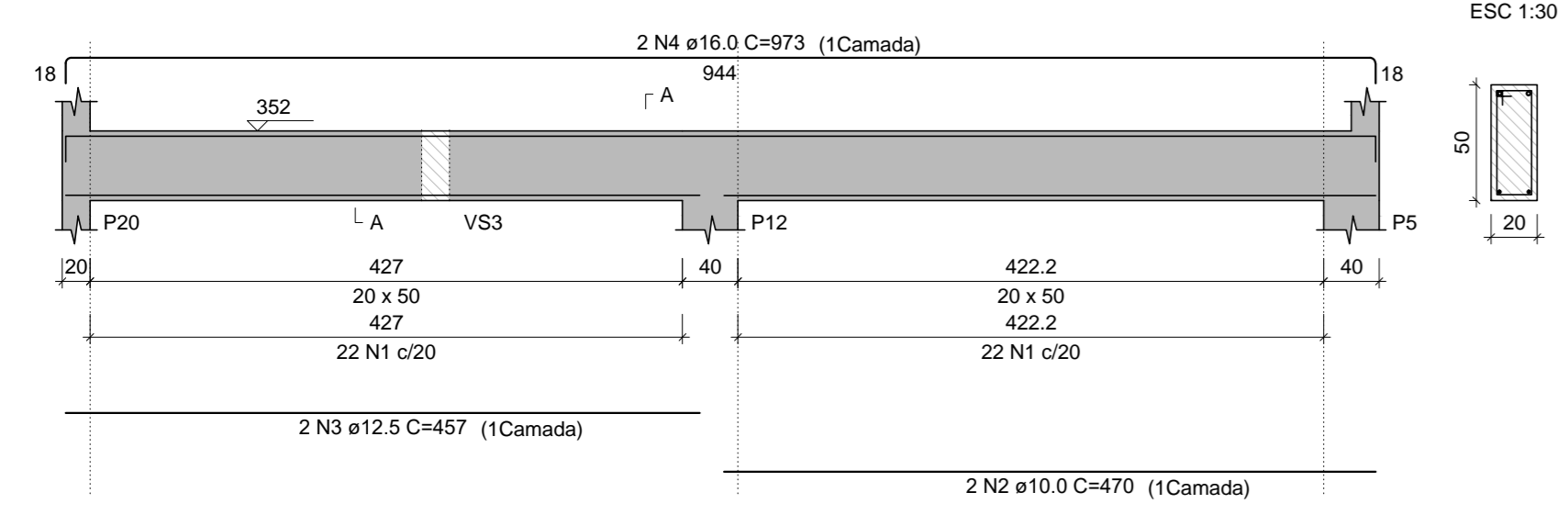
VS29 (20 x 50)
ESC 1:30



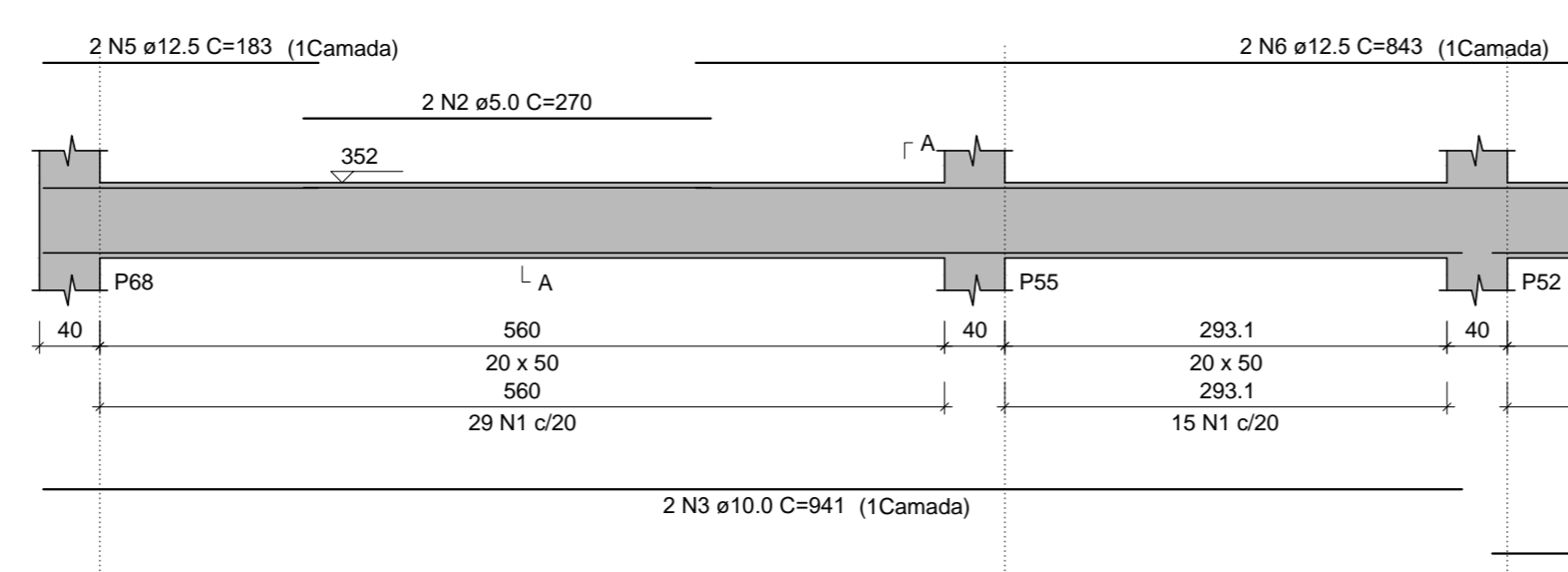
VS34 (14 x 50)
ESC 1:30



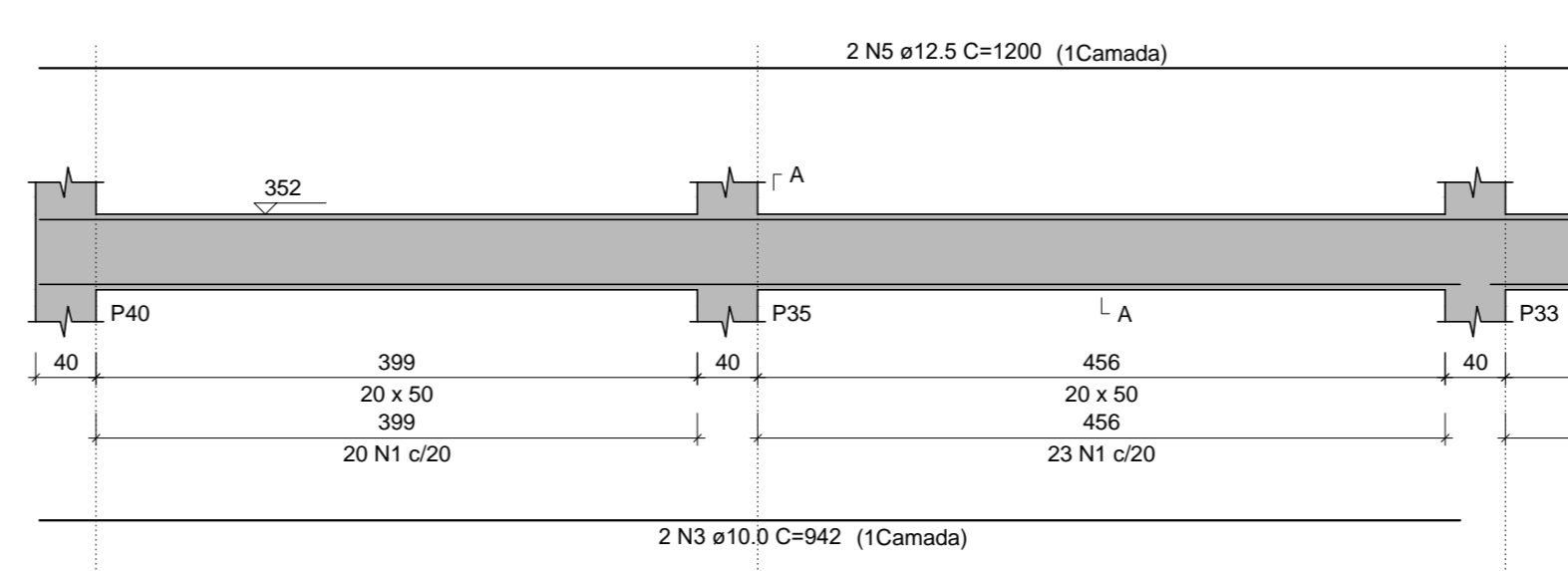
VS33 (20 x 50)
ESC 1:30



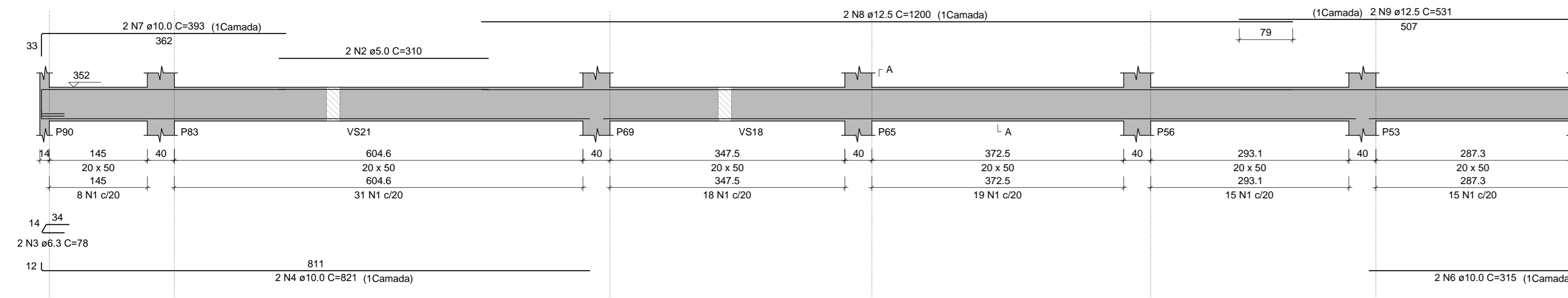
VS35 (20 x 50)
ESC 1:30



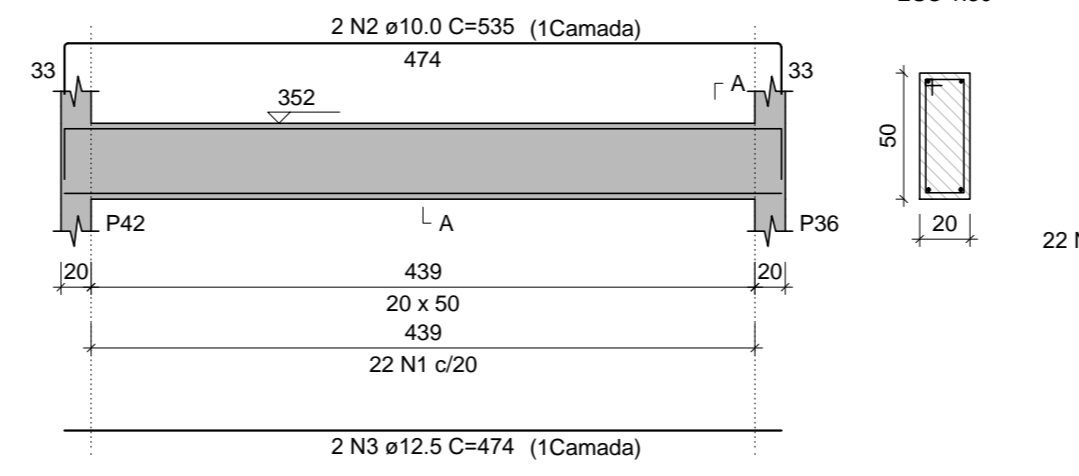
VS36 (20 x 50)
ESC 1:30



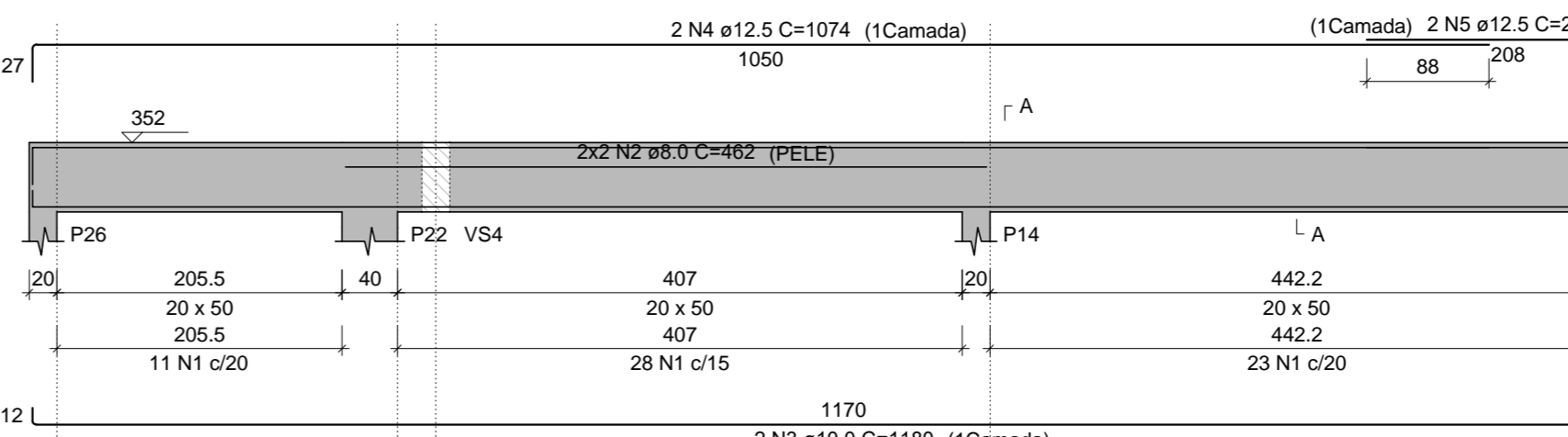
VS37 (20 x 50)
ESC 1:30



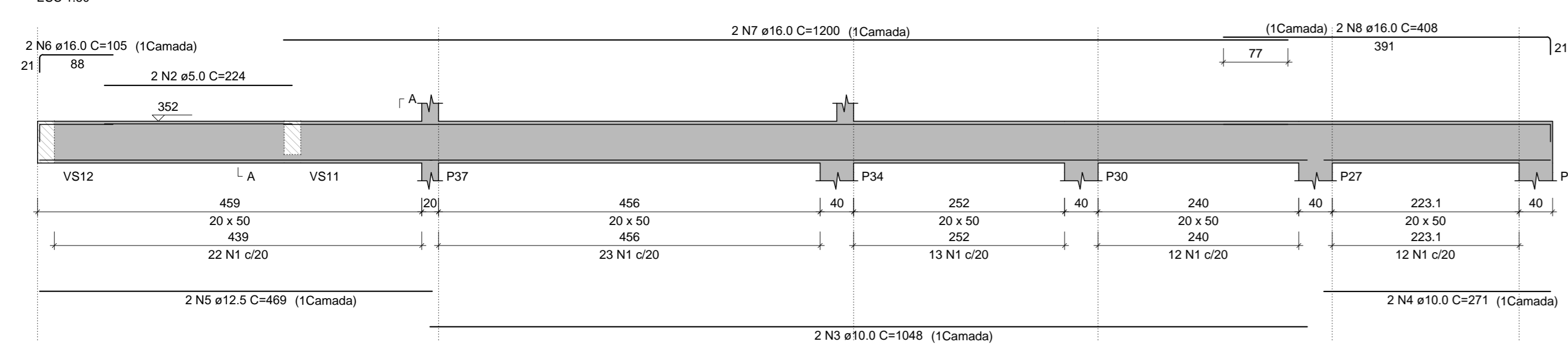
VS38 (20 x 50)
ESC 1:30



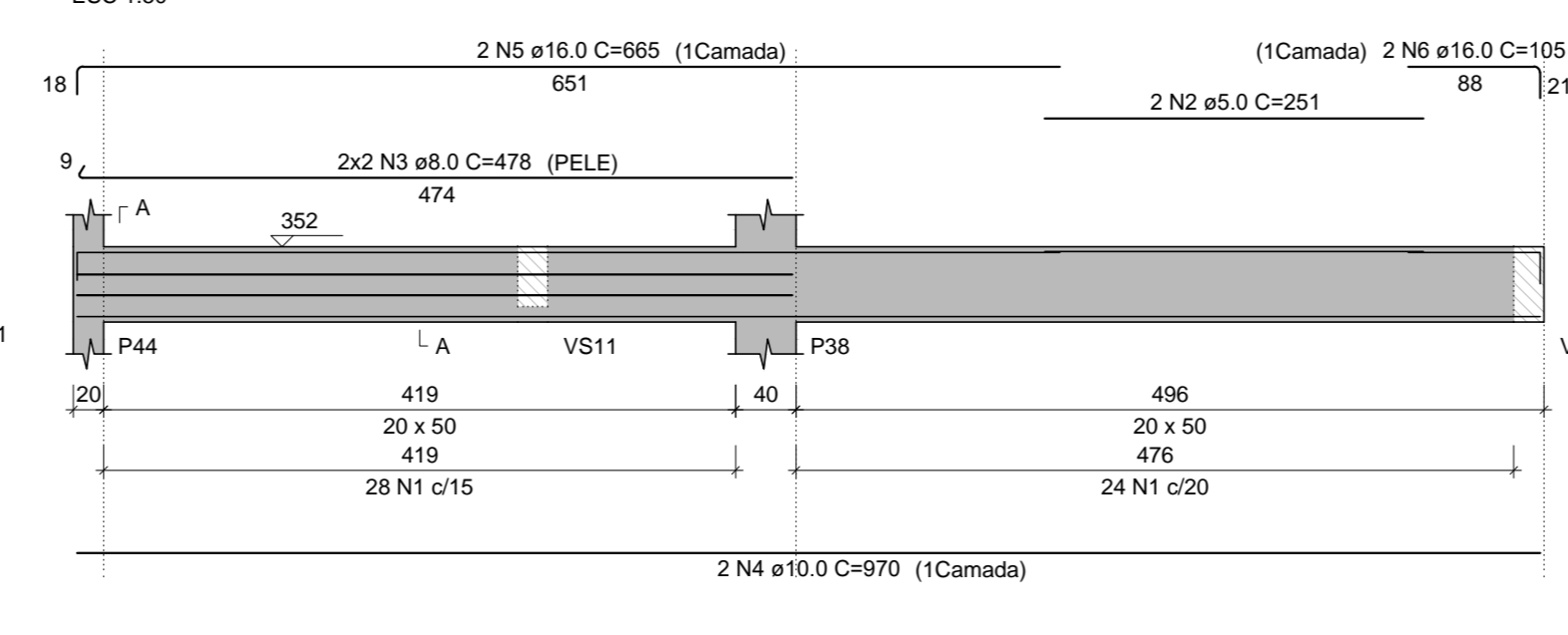
VS39 (20 x 50)
ESC 1:30



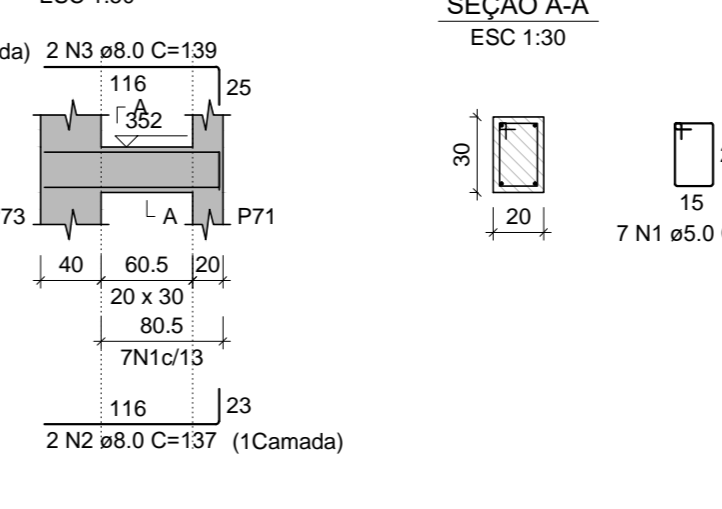
VS40 (20 x 50)
ESC 1:30



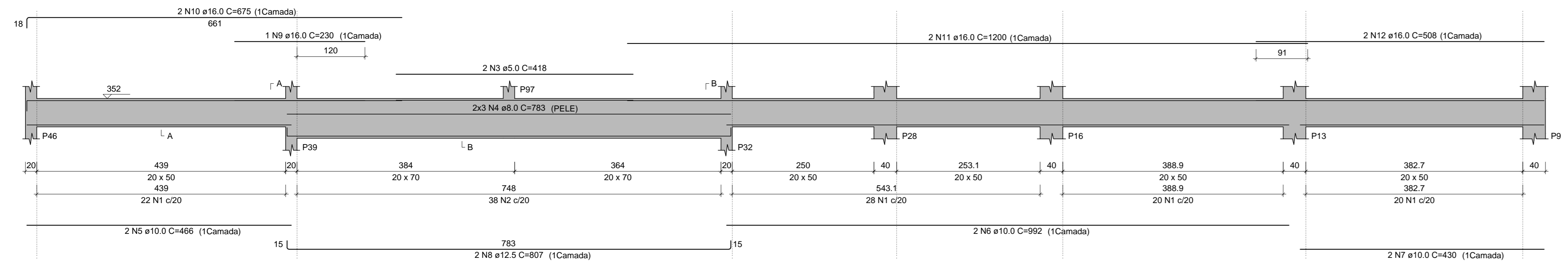
VS41 (20 x 50)
ESC 1:30



VS42 (20 x 30)
ESC 1:30



VS44 (var)
ESC 1:30



RELAÇÃO DO AÇO

ELEMENTO	AÇO	N	DIAM (cm)	QUANT	C TOTAL (cm)	C TOTAL (cm)
VS24	CASO 1	5.0	93	131	12183	
	CASO 2	5.0	2	254	526	
	CASO 3	5.0	2	254	526	
	CASO 4	10.0	2	586	1176	
	CASO 5	10.0	2	982	1984	
	CASO 6	10.0	2	402	804	
	CASO 7	10.0	2	176	356	
	CASO 8	12.5	2	370	740	
	CASO 9	12.5	2	995	1990	
	CASO 10	12.5	2	131	262	
VS25	CASO 1	10.0	2	944	1888	
	CASO 2	10.0	2	944	1888	
	CASO 3	12.5	2	944	1888	
	CASO 4	12.5	2	944	1888	
	CASO 5	5.0	42	131	5502	
	CASO 6	5.0	2	462	924	
	CASO 7	12.5	2	465	930	
	CASO 8	12.5	2	465	930	
	CASO 9	10.0	2	974	1948	
	CASO 10	10.0	2	974	1948	
VS26	CASO 1	5.0	38	131	4978	
	CASO 2	5.0	2	469	938	
	CASO 3	12.5	2	469	938	
	CASO 4	10.0	2	857	1714	
	CASO 5	5.0	63	131	8253	
	CASO 6	5.0	2	249	498	
	CASO 7	8.0	4	212	848	
	CASO 8	10.0	1	442	884	
	CASO 9	10.0	1	225	450	
	CASO 10	10.0	2	909	1818	
VS27	CASO 1	10.0	2	194	388	
	CASO 2	12.5	2	584	1168	
	CASO 3	12.5	2	584	1168	
	CASO 4	10.0	2	1009	2018	
	CASO 5	10.0	2	1009	2018	
	CASO 6	5.0	44	131	5764	
	CASO 7	10.0	2	470	940	
	CASO 8	12.5	2	457	914	
	CASO 9	10.0	2	973	1946	
	CASO 10	5.0	7	119	595	
VS28	CASO 1	5.0	58	131	7586	
	CASO 2	5.0	2	270	540	
	CASO 3	10.0	2	941	1882	
	CASO 4	10.0	2	941	1882	
	CASO 5	12.5	2	183	366	
	CASO 6	12.5	2	183	366	
	CASO 7	10.0	2	765	1530	
	CASO 8	10.0	2	765	1530	
	CASO 9	12.5	2	1200	2400	
	CASO 10	12.5	2	1200	2400	
VS29	CASO 1	5.0	106	131	13866	
	CASO 2	5.0	2	284	568	
	CASO 3	5.0	2	76	156	
	CASO 4	10.0	2	821	1642	
	CASO 5	10.0	2	1113	2226	
	CASO 6	10.0	2	315	630	
	CASO 7	10.0	2	303	606	
	CASO 8	12.5	2	1200	2400	
	CASO 9	12.5	2	531	1062	
	CASO 10	12.5	2	531	1062	
VS30	CASO 1	5.0	22	131	2882	
	CASO 2	10.0	2	535	1070	
	CASO 3	12.5	2	474	948	
	CASO 4	5.0	82	131	8122	
	CASO 5	8.0	4	462	1848	
	CASO 6	10.0	2	1180	2360	
	CASO 7	12.5	2	1074	2148	
	CASO 8	12.5	2	1074	2148	
	CASO 9	5.0	2	222	444	
	CASO 10	5.0	82	131	10742	
VS31	CASO 1	10.0	2	1045	2090	
	CASO 2	10.0	2	271	542	
	CASO 3	12.5	2	469	938	
	CASO 4	10.0	2	105	210	
	CASO 5	16.0	2	1200	2400	
	CASO 6	16.0	2	408	816	
	CASO 7	10.0	2	251	502	
	CASO 8	8.0	4	478	1912	
	CASO 9	10.0	2	870	1740	
	CASO 10	16.0	2	665	1330	
VS32	CASO 1	16.0	1	200	400	
	CASO 2	16.0	1	200	400	
	CASO 3	5.0	7	91	455	
	CASO 4	5.0	7	91	455	
	CASO 5	8.0	2	139	278	
	CASO 6	8.0	2	131	262	
	CASO 7	8.0	2	171	342	
	CASO 8	5.0	2	418	836	
	CASO 9	8.0	6	783	3894	
	CASO 10	10.0	2	992	1984	
VS33	CASO 1	10.0	2	630	1260	
	CASO 2	12.5	2	807	1614	
	CASO 3	16.0	1	200	400	
	CASO 4	16.0	2	675	1350	
	CASO 5	11.0	2	1000	2000	
	CASO 6	16.0	2	508	1016	
	CASO 7	16.0	2	508	1016	
	CASO 8	16.0	2	508	1016	
	CASO 9	16.0	2	508	1016	
	CASO 10	16.0	2	508	1016	

PROJETO ESTRUTURAL

ORG: INSTITUCIONAL PROJETO: ACSU SE 60, CONJ. 2, LT. 03-A, AV. NS 02 (R02 SUL) - PALMAS - TO
 CLIENTE: FUNDAÇÃO PRO-TOCANTINS
 ARQUITETO: - Vigas do pavimento SUPERIOR - Folha 2
 REVISOR: REV. 001 DATA: AGOSTO/2020 ESCALA: INDICADA
 CALIBRE DIAS NAZARENO
 CALIBRE DIAS NAZARENO
 13/24